

invested in growth

# Segra

# Segra HLVd Test Kit

Rapid HLVd detection kit  
with RT-PCR analysis and  
digital reporting



Detect earlier.  
Reduce risk.  
Protect crop performance.



Distributed by



West Division

#602 - 19055, Airport Way, Pitt Meadows (British Columbia) V3Y 0G4



Phone: 604.438.4025



Toll free: 1.866.438.4025



General E-mail: [infoWest@biofloral.com](mailto:infoWest@biofloral.com)



Orders E-mail: [orderwest@biofloral.com](mailto:orderwest@biofloral.com)

HLVd can spread easily from infected plants to cuttings, through contaminated tools or water, or by insect vectors and may not cause visible symptoms until after onset of flowering. The most common mechanism of transfer is from non-symptomatic infected mother plants to clones, which can result in rapid spread throughout a grow area. Regular RT-PCR testing

is the best way to identify non-symptomatic plants to eliminate infections before they spread. A robust testing regiment will protect crop health and prevent costly surprises at harvest, avoid economic losses associated with misdiagnosed or untreated HLVd outbreaks and maximize plant performance, including potential yield and cannabinoid levels.

Segra's HLVd Test Kit is designed to address the challenges posed by HLVd: Tool and tool-free sample methods are adapted to prevent cross-contamination between plants during sampling, and our rapid RT-PCR testing procedure and streamlined digital results ensure rapid turnaround times. Packs of 10 or 100 with shelf stability of 6 months, they are available when you need them and can be shipped to our lab on your schedule.

Easy step-by-step instructions for collection of leaves and roots are provided, including a tool-free variation that minimizes contact with plants and avoids the need to sterilize tools between plants.



## CONTENTS (10-PACK)

- 1 Outer Tubes – Contains sample vial and parchment. Prevents cross-contamination between samples on return shipping.
- 2 Sample Vials & Labels – Contains sample preservation buer and grinding beads. Circular label for pot of sampled plant that provides traceability from plant to sample.
- 3 SamplingInstructions – Step-by-step guide for collecting leaves or roots for testing.
- 4 Sample Scratchpad – To record sample name and number before scanning the QR code to submit the information online.
- 5 Parchment Paper – Used for tool-free sample collection methods or as a clean surface for sampled roots or leaves.

## CUSTOMER-SUPPLIED ITEMS

- 6 Disposable Gloves – Latex, vinyl or nitrile.
- 7 10% Bleach Solution<sup>1</sup> (Beaker) – Make fresh. Sterilize several tools, rotating between them.
- 8 10% Bleach Solution<sup>1</sup>(Spray bottle) – Make fresh. Spraygloved hands between each plant sampled.
- 9 Scissors, Tweezers or Pruning Shears – Used to collect samples if not following tool-free method.

<sup>1</sup>1:10 dilution of household bleach containing 5.25% sodium hypochlorite

- Rapid Sampling Method
- 24-72hr Lab Turnaround
- Digital Result Report



## Preparation Before Sampling

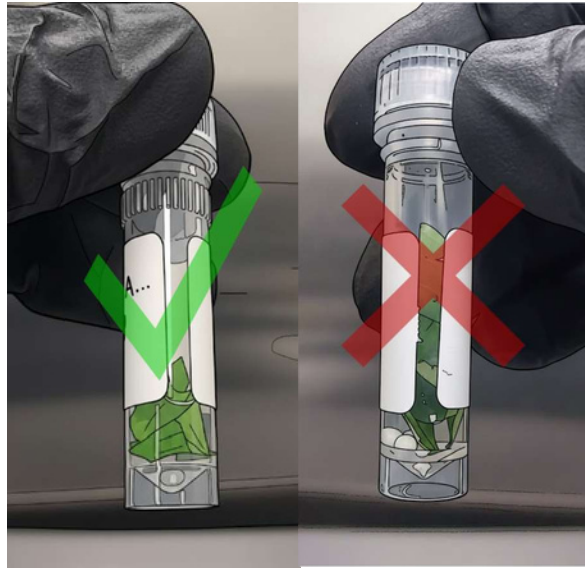


1. Work on one sample at a time. Record Sample Name, Sample # (on vial), and Sample Type on supplied Scratch Pad.
2. Empty contents of one kit onto a clean, flat surface.  
 Pro tip: A clean plastic clip board works well for this purpose!
3. Remove round sticker from vial and place on pot of plant being sampled to trace HLVD result back to the source.

## Sampling Leaves or Exposed Roots



4. Remove cap from sample vial and place on clean surface facing up. Vial contains buffer and beads, so careful not to spill the contents.
5. A) Tool-free Sampling Method: Hold vial under a leaf with the parchment paper in the other hand. Press leaf firmly onto the vial. Rotate the vial back and forth to cut a small (~5 mm) piece of leaf into the vial.
5. B) Scissor/ Pruning Shear Method: Hold the vial under the tip of a leaf. Carefully slice off a small (~5 mm) section of leaf directly into the vial. Soak tools in 10% bleach for at least 1 min between plants and dry thoroughly before next use.



6. Each ~5 mm section of leaf collected in 5A or 5B should cover an area of about ¼ to ½ of the vial opening.

7. Repeat 3-5 times, sampling leaves from different parts of the plant. When complete, vial should be approximately ¼ full (left). Do not fill the vial more than halfway (right).

8. Securely fasten the lid of the vial to prevent leaking and place back into the outer tube to be shipped. Discard parchment paper and sanitize gloves with 10% bleach before collecting the next sample.

### Note on Sampling Roots

The above protocol may be directly adapted to collect exposed roots, which are often visible in rooted clones, aeroponic or hydroponic plants, or plants grown in dense fibrous substrates such as Rockwool. If sampling from a plant grown in a loose substrate such as coco coir or peat, ensure the root has been thoroughly cleared of any debris before placing in the sample collection vial.

### Shipping

All 10 samples can be sent back at once, or some can be saved for a later testing date (the sample buffer is stable for 6 months).

Scan QR code to submit contact and sample information online. Samples may be shipped under ambient conditions, although icepacks are recommended if temperatures are forecasted over 25°C.

Scan to Submit Info:



Mail Samples to:  
 Segra GMLSD  
 108-21300 Gordon Way  
 Richmond, BC  
 V6W 1M2

### What Happens Next:

- Segra's Genotyping and Molecular Lab Services Division (GMLSD) will notify the contact personnel indicated on the sample submission form when samples are received.
- Samples will be processed within 3 business days of receiving them.
- An electronic report will be delivered as soon as results become available.

invested in growth

# Segra

## Available through BioFloral

Trusted support for professional HLVD testing programs

Segra HLVD Test Kits help growers detect risk early with a practical sampling process, RT-PCR analysis and digital reporting.

For product availability, ordering information or support, contact BioFloral.



### West Division

#602 - 19055, Airport Way,  
Pitt Meadows (British Columbia) V3Y 0G4

**Phone:** 604.438.4025

**Toll free:** 1.866.438.4025

**General E-mail:** [infoWest@biofloral.com](mailto:infoWest@biofloral.com)

**Orders E-mail:** [orderwest@biofloral.com](mailto:orderwest@biofloral.com)



Contact your BioFloral representative to learn more.